



**COMPLETE  
CONNECTIVITY FOR  
OFFSHORE  
DIGITALISATION**



**Oil & Gas**



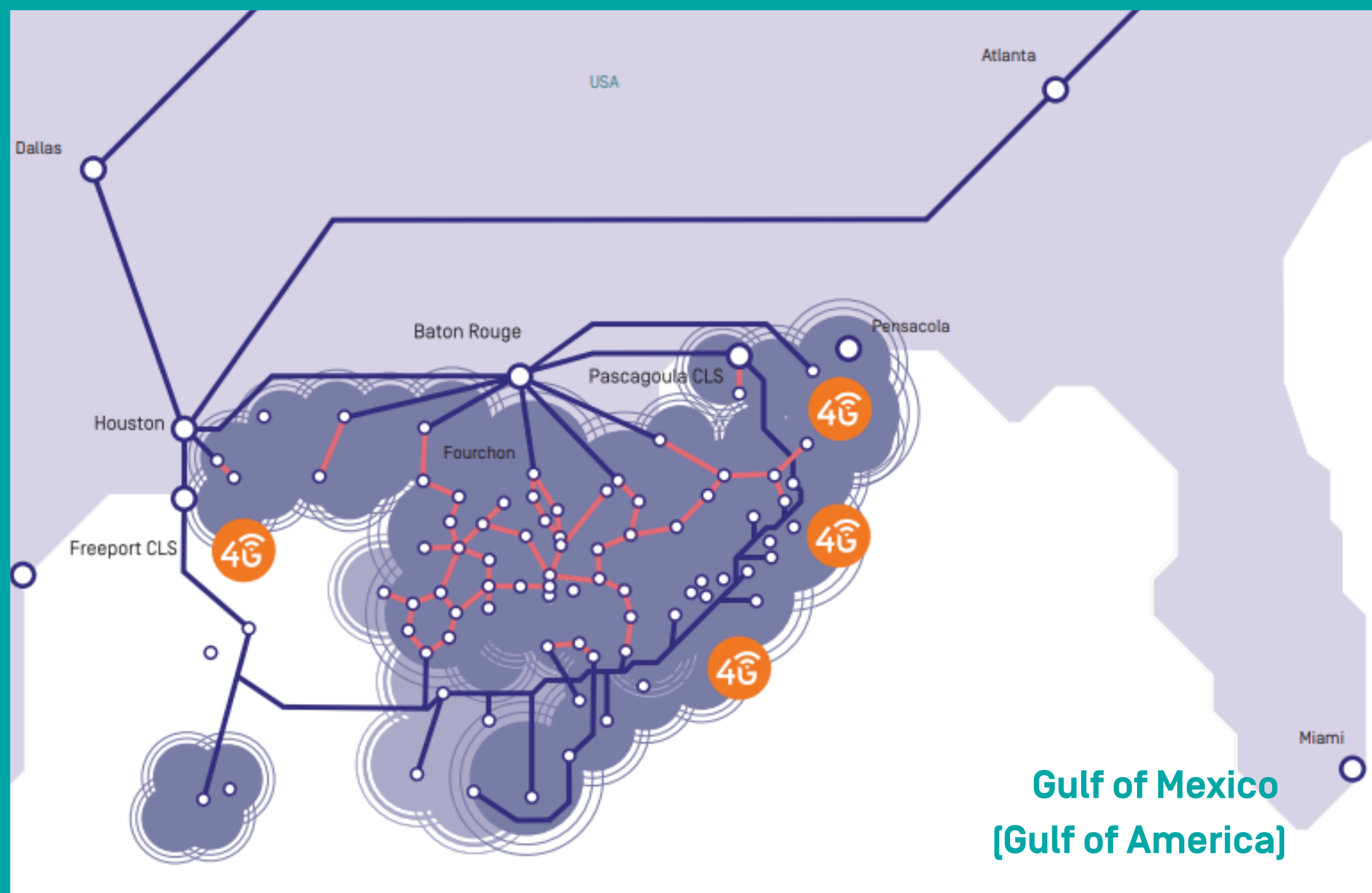


For over 22 years, Tampnet has owned and operated the world's largest offshore subsea fibre and LTE network.

Integrating the latest technologies like LEO satellite, SD-WAN and dynamic switching, we ensure secure and reliable connectivity to platforms, vessels and mobile rigs, enabling digitalisation for efficient and sustainable operations.

- Over 600.000 km<sup>2</sup> of 4G/5G coverage
- Over 5.000 km of subsea cable
- 200+ assets connected
- 150.000+ mobile users



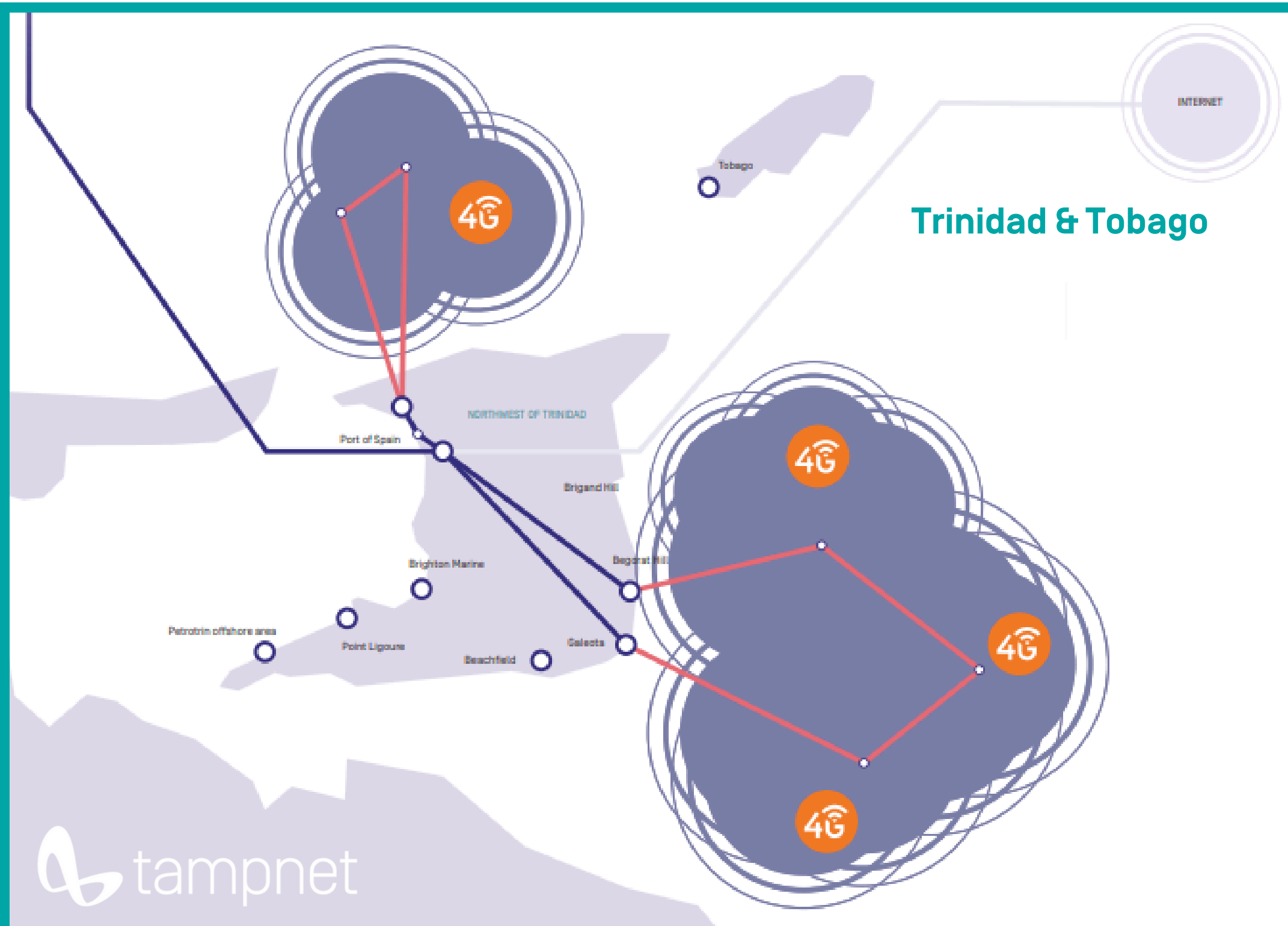


## Coverage and Control

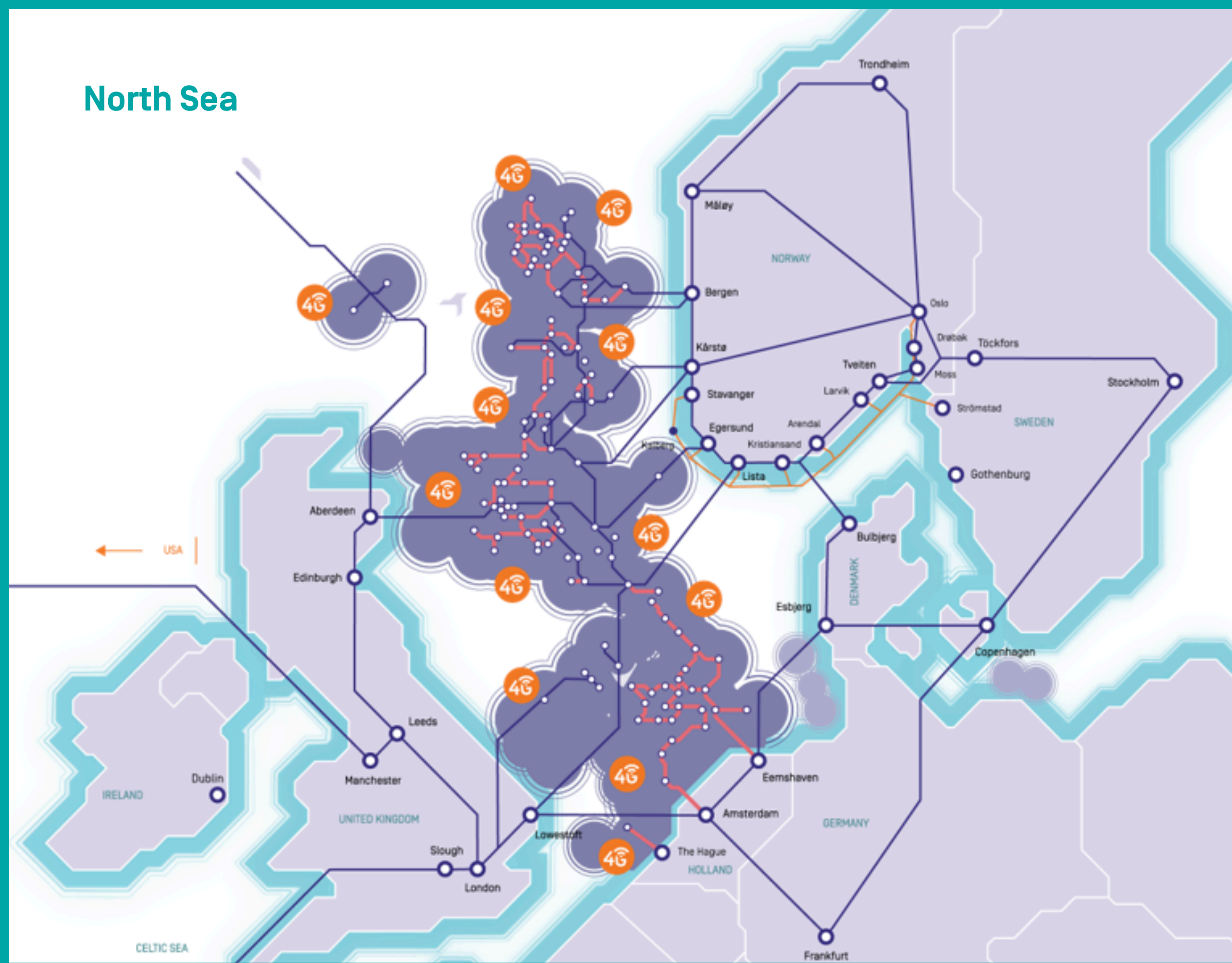
- Fully managed service with SLA options
- Licensed Mobile Spectrum (and unlicensed)
- Local/Private core in redundant configurations
- Autonomous operation

## Secure Networks

- 3GPP telecom security standards
- Island mode / autonomous operation
- Local Firewall control all traffic
- Alignment with industry standards [IEC 62443]



## North Sea



## Operational flexibility and scalability

- Fully managed service with SLA options
- Manage your own subscribers
- Visibility into performance monitoring
- Life cycle management without service impact
- High scalability of users/devices
- Tampnet Connected Rig offers full 4G/5G and LEO coverage to both mobile and fixed facilities

## Canada



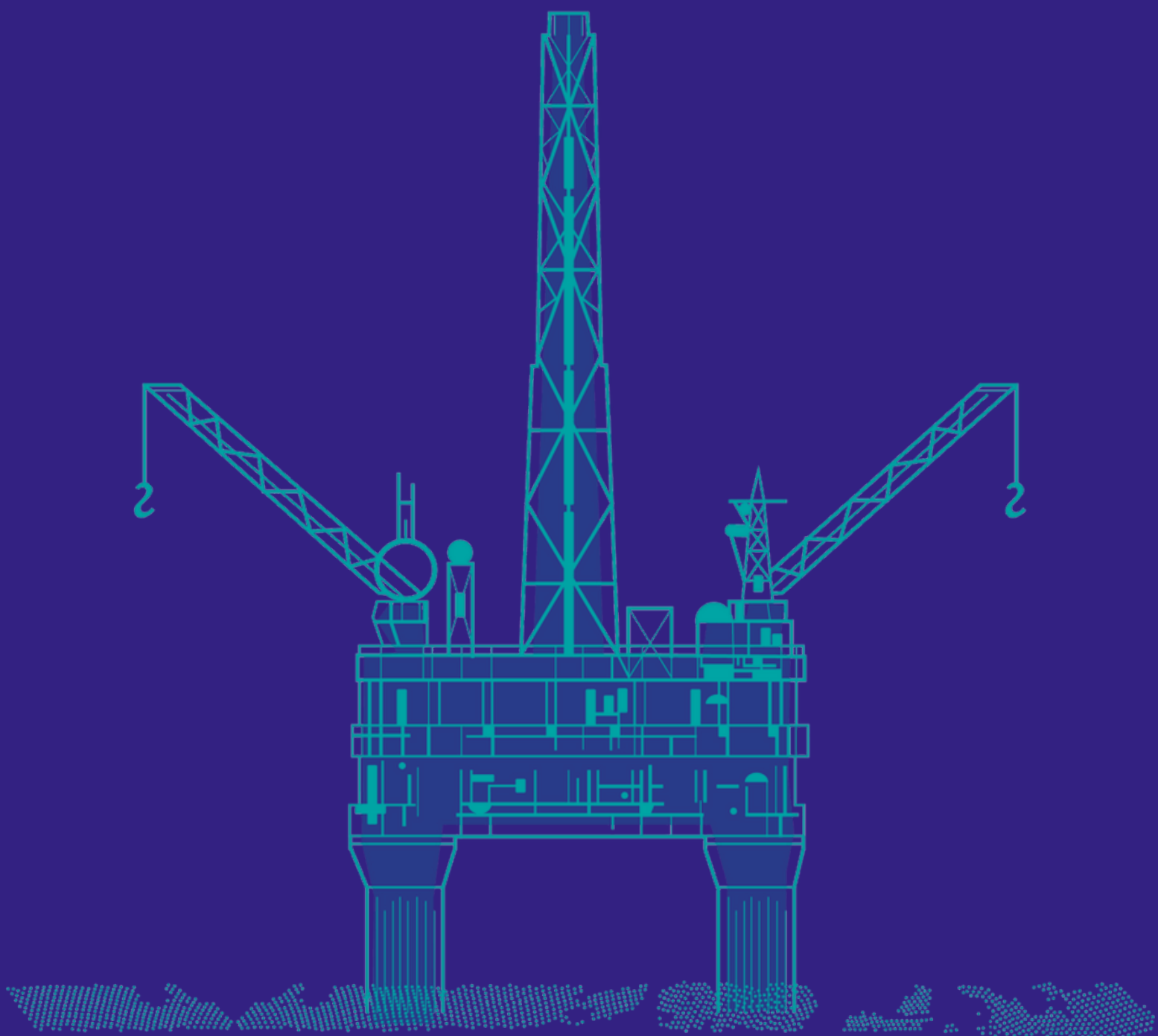


# SECURE & RELIABLE OFFSHORE SOLUTIONS

Tampnet provides offshore installations with high-speed internet connection through subsea fibre optic broadband.

Our offshore 4G/5G and line-of-sight [LoS] networks provide reliable connectivity to surrounding installations and vessels - even in rough weather.

Partnering with LEO satellite providers, Starlink and Oneweb, we provide dynamic and flexible connectivity solutions to keep you connected anywhere.





# THE CONNECTED RIG

Custom-built to meet individual site needs, this secure solution incorporated all the latest telecommunications core technologies to ensure data is managed according to latency requirements, criticality and analytics demands.

The solution is flexible and scalable, with the capacity to add thousands of devices and users, making it perfect for increasing availability of offshore sensors, tablets and IoT devices.

## **IoT and Offshore Rig Monitoring**

- ATEX/IECEX certified wireless sensor solutions for Asset Integrity, Predictive Maintenance and Condition Monitoring applications.
- Digital twin technology and the use of big data analytics for optimised operational performance
- Improved worker safety, especially for lone workers in hazardous working environments

## **ROVs and Subsea Operations**

- More efficient subsea inspections, maintenance and repairs (IMR)
- Crystal clear, HD live streams to other control rooms and vessels
- Advanced decision-making in real-time



# PROVEN RESULTS

High-capacity internet access enables digitalisation of your business needs, resulting in faster and improved decision-making, increased efficiency, sustainability and major cost savings.

## Tested and proven applications include:



### Asset integrity

- Corrosion Under Insulation
- Vibration monitoring
- Condition monitoring



### Live Asset Monitoring

- Dynamic positioning of vessels
- Mobile asset tracking
- Autonomous operations
- Drone and robot connectivity



### Connected Worker

- Wearable safety technology
- Remote collaboration
- Real-time access to resources and data
- Digital work flows



### Crew Welfare

- 4G coverage throughout crew facilities [e.g. mess and cabins]
- Improved work/life balance, job satisfaction and crew retention
- Remote learning & upskilling opportunities
- Improved down-time with fast internet access on smart devices





# CONNECTIVITY SOLUTIONS AT A GLANCE



## **Connected Platform**

Revolutionise offshore operations with our high-speed connectivity



## **Digital Services**

Digitalise your business to improve efficiency, sustainability and wellbeing



## **Marine Coverage**

Fast and reliable coverage in any weather with our offshore 4G/5G Network and LEO satellite connectivity for global coverage



## **On-asset Coverage**

Establish 100% coverage inside any vessel, rig, or offshore platform



## **Single Sim Solutions**

We partner with terrestrial telecom operators to provide greater coverage from sea to port



## **Construction**

Design and installation of complete connectivity & network solutions, including temporary LEO satellite connectivity and cable laying





TAMPNET.COM

